

NOTES:

1. USE 6" SQUARE TREATED POLE(S) OR EQUAL.
2. BACKFILL POLE(S) WITH CONCRETE FOR STABILITY.
3. CUSTOMER IS RESPONSIBLE FOR TRENCHING, CONDUIT, AND BACKFILLING.
4. CUSTOMER TO INSTALL PULL STRING IN ALL CONDUIT FOR USE BY REU.
5. USE SCH. 40 PVC CONDUIT BELOW GRADE PER TABLE 1 FOR REU USE.
6. USE SCH. 80 CONDUIT BENEATH DRIVING SURFACES AND WITHIN 8'-0" ABOVE FINISHED GRADE.
7. USE 36" RADIUS ELBOWS.

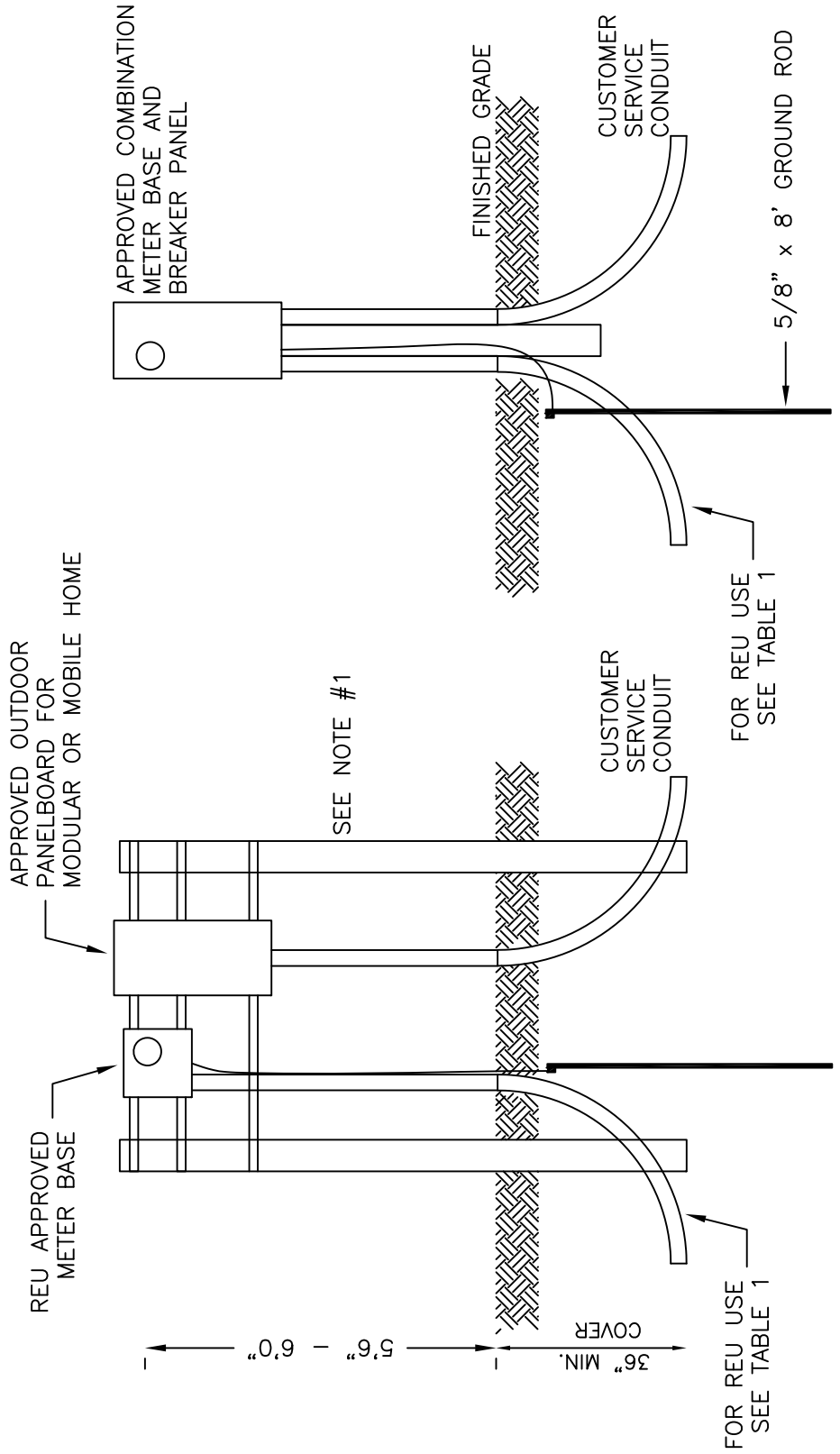
SERVICE ENTRANCE SIZE (AMPS)	CONDUIT SIZE	WIRE SIZE
100	2"	#2/0
200	2 1/2"	#4/0
400	3"	350 kcmil

TABLE 1

SPECIFICATIONS FOR UNDERGROUND ELECTRICAL SERVICE MODULAR OR MOBILE HOME

PREPARED BY: KDB
 CHECKED BY: JD
 APPROVED BY: KDB
 ROCKWOOD ELECTRIC UTILITY
 341 W. ROCKWOOD ST.
 ROCKWOOD, TN 37854

SCALE: NONE
 DRAWING NUMBER: UGS-011
 REV.: 1



SEE NOTE #1

FOR REU USE SEE TABLE 1

FOR REU USE SEE TABLE 1

5/8" x 8' GROUND ROD